



# Environmental Family

SELECTUS URBAN SERIES  
95 US GAL (360L)



ENVIRONMENTAL

Real Crowd Pleaser  
two types of collection  
with a single container.

# Environmental Family

## Dual Collection



### Features

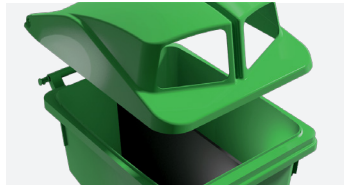
- 95 US GAL / 360L capacity container (MasterCart)
- Dual-compartment dome top lid
- Lid available in green, blue and charcoal
- Designed for fully automated, semi-automated and manual collection
- Easy-open lightweight dual hinge lid
- Made of low-density, rotationally molded recyclable polyethylene plastic
- Manufactured with UV protection

IPL is proud to offer Selectus, the dual dome lid designed to fit perfectly on our 95 US GAL/360L roll-out cart. Selectus pairs contemporary design with a rugged structure built to withstand the toughest conditions. This new product is a practical and effective way to promote waste and recycling collection in public spaces and at events

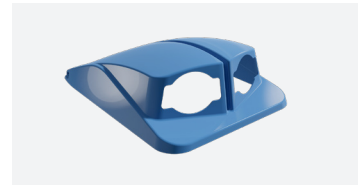
Selectus is built for industrial, commercial, and institutional environments. The dual top lid allows users to offer two types of collection with a single container. It's the perfect match for our industry-leading Mastercart, the durable easy-store and easy-use roll-out cart designed for lasting performance and leak protection. It can be used indoors and out and features smooth surfaces for easy cleaning

## Options

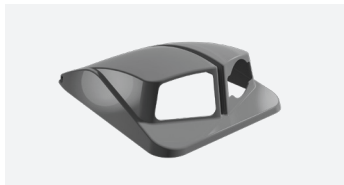
- Optional two bag holder inside cart
- Lid lock attachment
- Three dome lid options for waste, organics and recycling (cans and bottles)



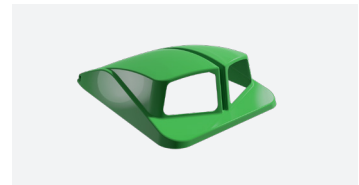
Optional two bag holder inside cart



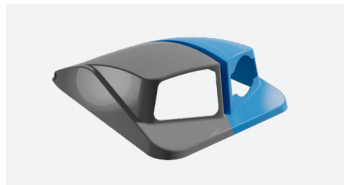
Dome lid options for recycling



Dome lid options for waste, organics and recycling (cans and bottles)



Dome lid options for organics



Dual lid options for waste and recycling (cans and bottles)



# Environmental Family Specifications

95 US GAL / 360L (Product No 60204)

	in	cm
Depth	33.75	85.7
Width	26.25	66.7
Height	46.25	117.5
Wheel diameter	10/12	25/30
Standard Axle	3/4	1.9
Walls	0.183	0.47
	lbs.	kg
Load rating	335	152
Assembly weight	39-45	18-20

Standard Colors:



Other colors available upon request. Colors shown may vary slightly from actual product.

Warranty

- 3-year limited warranty for lid (under normal use)
- The most durable cart in North America
- Meets all American National Standards Institute (ANSI) requirements for safety and litter system compatibility (ANSI Z245.30 and Z245.60)
- Cart is 100% recyclable, Code #2



Certifications

When you choose IPL, you work with a recognized industry leader. IPL was the first plastic injection company to achieve ISO 9001 quality certification in North America. The addition of ISO/TS16949 certification further demonstrates IPL's commitment to quality. These quality initiatives demonstrate our capabilities and know-how.