



Consumer Packaging

SNAPPACK RECTANGLE SERIES
12 OZ. / 350 ML TO 16 OZ. / 500 ML



FOOD MANUFACTURING AND PROCESSING

Enhanced design, premium safety

SnapPack Rectangle

Get better shelf appeal through differentiation



Features

- Wide opening
- Wrap around IML decoration & bottom window
- Bottom decoration available
- Large IML decoration surface on the lid
- 100% recyclable polypropylene

Benefits

- Integrated, non-detachable tamper-evident system
- Microwave and dishwasher safe

We don't just make containers, we understand the importance of reaching and attracting your customers at the point of purchase.

ENHANCED DESIGN, PREMIUM SAFETY

A rectangular tamper-evident container family, featuring added branding value with a modern design and photo quality IML graphics.

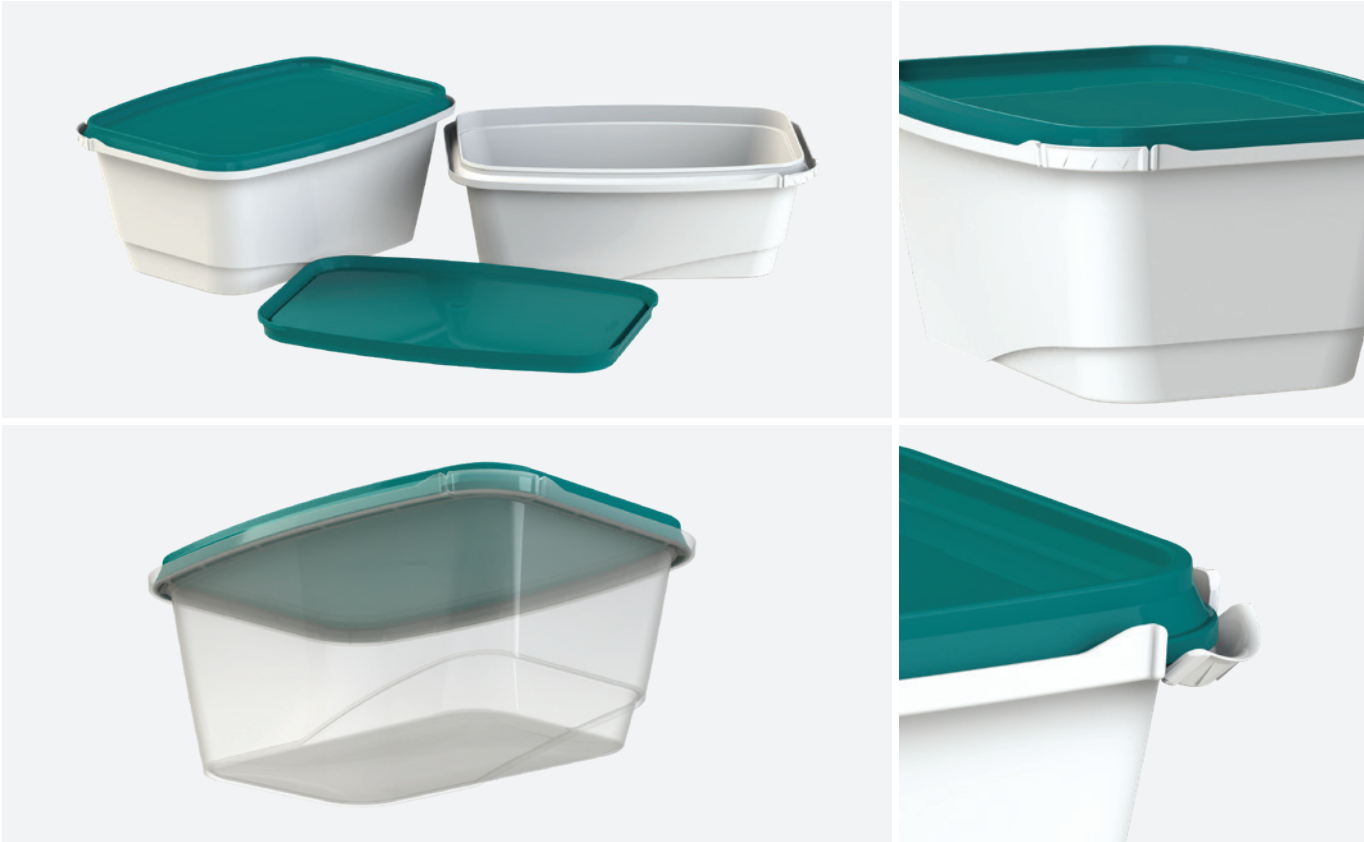
For every need

Deli

Salads, soups, sauces, dips, other refrigerated products.

Dairy

Cultured dairy, cheese, spreads, shredded cheese.



Mod.: 23586
12 oz. - (350 ml)
5.80" (L) x 4.15" (W) x 1.97" (H)



Mod.: 25086
16 oz. - (500 ml)
5.80" (L) x 4.15" (W) x 2.45" (H)

SnapPack Rectangle Specifications

www.iplglobal.com

1-800-647-0602

CONTAINERS

Product Code	Model	Decoration Options†		Under Lid Capacity		Approx. Weight		Overall Height	A	Overall Length	B	Overall Width	C	Items Per Box	Boxes Per Pallet	Items Per Pallet
		IML	Offset	US fl.oz.	ml	oz.	g	in.	mm	in.	mm					
23586	12 oz. / 350 ml	✓	W/B	14.44	427	0.61	17.3	1.97	50.1	5.80	147.3	4.15	105.3	600	25	15,000
25086	16 oz. / 500 ml	✓	W/B	18.09	535	0.70	19.9	2.45	62.2	5.80	147.3	4.15	105.3	608	25	15,200

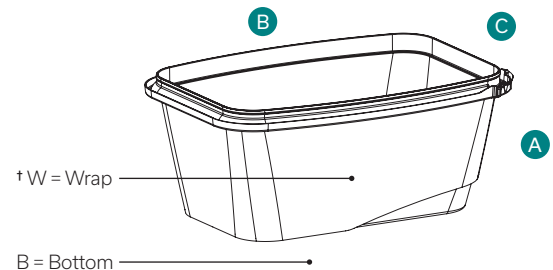
Development is possible for other sizes sharing same lid

LID

Product Code	Associated Containers Code	Decoration Options		Approx. Weight		Height	A	Length	B	Width	C	Items Per Box	Boxes Per Pallet	Items Per Pallet
		IML	Offset	oz.	g	in.	mm	in.	mm	in.	mm			
20086	All sizes of containers	✓		0.33	9.4	0.34	8.6	5.70	144.7	4.02	102.1	1,224	24	29,376

Color Options

Base Colors	Standard Colors	Other Colors
Natural 000	Yellow 012	Available on request
White 001	Orange 021	
Clear 002	Red 485	
	Green 377	
	Blue 293	
	Black 099	



Certifications

The raw materials used are tested according to ASTM standards for polymers, are approved for food contact and meet FDA (Food and Drug Administration, USA) and HPB (Health Protection Branch, Canada) regulations. Our facilities and rigorous quality control processes have earned us certification under the following standards: ISO 9001, HACCP, IMS, SQF, C-TPAT & ISO 14001 registered management system.

Recommendations

Handling conditions vary from customer to customer. We recommend validating your processes (filling, conveying, warehousing and any others that might affect the purchased part) prior to use. Product usage temperature is between -9.4°F (-23°C) and 179.6°F (82°C) depending on resin grade.

Warranties

Some chemicals can affect the integrity of the product. Any product requiring a Safety Data Sheet (SDS) has to be submitted and approved by IPL. If buyer fails to adhere to this clause, the related product guarantees will be void.

Contact your IPL representative to ensure you have the most recent information.

The information presented herein was prepared at IPL Inc. by qualified technical personnel. To IPL's knowledge, it is true and accurate. However, the information and recommendations are provided for these products with the understanding that the customer will independently determine that the product is suitable for the intended use, and that such use, complies with all applicable laws and regulations. The data represents typical values submitted only for the user's information and consideration and does not constitute a warranty of any kind.