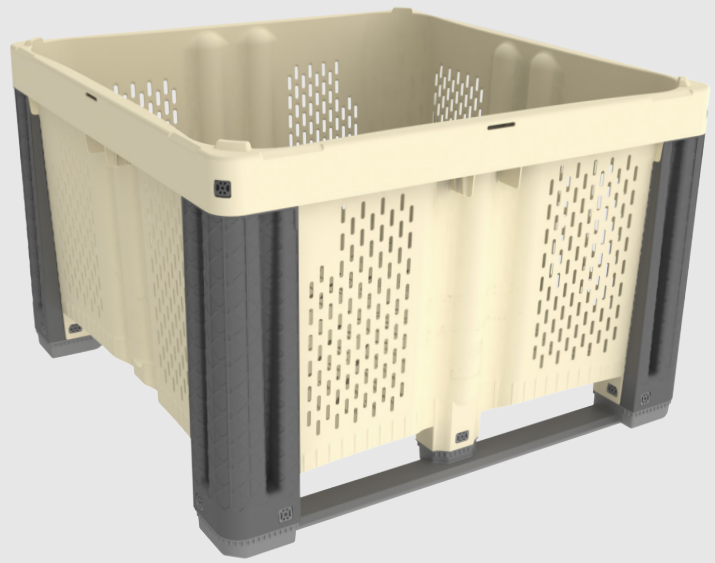


Hybrid 1212 FV

HYBRID FAMILY

The Hybrid 1212 is exceptionally strong with a load capacity of 1,102 lbs (500 kg), perfect for the toughest harvest, handling, and storage applications. Ventilation can be configured for the specific application or can be completely solid. Shown here is the fully ventilated version. Our new innovative columns are designed to act as bumpers, absorbing and recoiling on impact to prevent breakage, greatly increasing the bin's durability. This extremely durable bin can also be stacked high with heavy loads, secured by lugs that prevent the bottom of one bin from coming into contact with the contents of the bin below it. Column and feet inserts are easily locked into place to create an ultra-strong agricultural bin.



Features

Smoother walls with all rounded edges, and less sharp angles; better than any traditional plastic bin

Innovative perimeter geometry keeps walls from bowing out

Smart design keeps base from deflecting and protects contents

Wall taper prevents walls from one bin crashing against the walls of any adjacent bins. We call this the "Bruise Buffer Zone"

Near 10% more ventilation than traditional plastic bins

Durable FDA-approved plastic

New column design absorbs and recoils on impact, instead of resisting impact and breaking

In a stack, the top bin doesn't nest into the bottom bin. Instead, it is secured by lugs, which allows full use of internal volume and keeps the feet and strap of the top bin away from the contents below

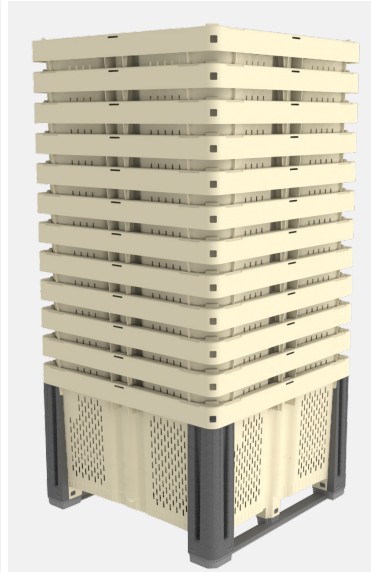
Hybrid 1212 FV

800-845-6555
www.iplglobal.com

Benefits of Using Hybrid 1212 FV



Column and feet inserts can be locked into place at destination.



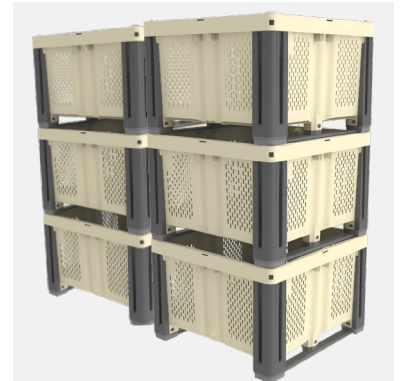
Bins nest in each other for cost efficient delivery anywhere in the world.



Ultra strong bins, can be stacked high with loads.

Hybrid 1212 FV Specification

Load Capacity	1,102 lbs (500 kg)
Volume Capacity	47,689 cubic inches (780 liters)
Tare Weight	69.9 lbs (31.7 kg)
Maximum Stack Weight ¹	11,023 lbs (5,000 kg)
Molding Process	Injection molding
Material	Virgin polypropylene resin
Approval	FDA-regulated material
Ventilation Slots	Customizable, from fully vented to completely solid
Fork Lift Entry	2-Way, 4-Way with 2 straps, or 4-Way with no straps
External Dimensions	47.24" (L) x 47.24" (W) x 31.1" (H) 1,200 mm (L) x 1,200 mm (W) x 790 mm (H)
Options	Color options, stickers, solid injection lid
Internal Dimensions	Length: 45.29" / 1150.5 mm Width: 45.29" / 1150.5 mm Minimal Clearance: 39.92" / 1014 mm



Once column and feet inserts are locked into place, configuration is permanent to create the strongest, most durable agricultural bin possible

Notes

Dimensions assume tolerance of ¼". Volume capacities assume tolerance of 5% and tare weights assume a tolerance of 4% unless noted otherwise. Ambient temperature approximately equal to 75° F. Data is subject to change.

1 Stack Weight = (weight of bin contents + tare weight of bin) X number of bins in stack

Please refer to the appropriate User Guide for information on the safe transportation, stacking and handling of Macro products. The User Guides in PDF format are available, call us at 800.845.6555.