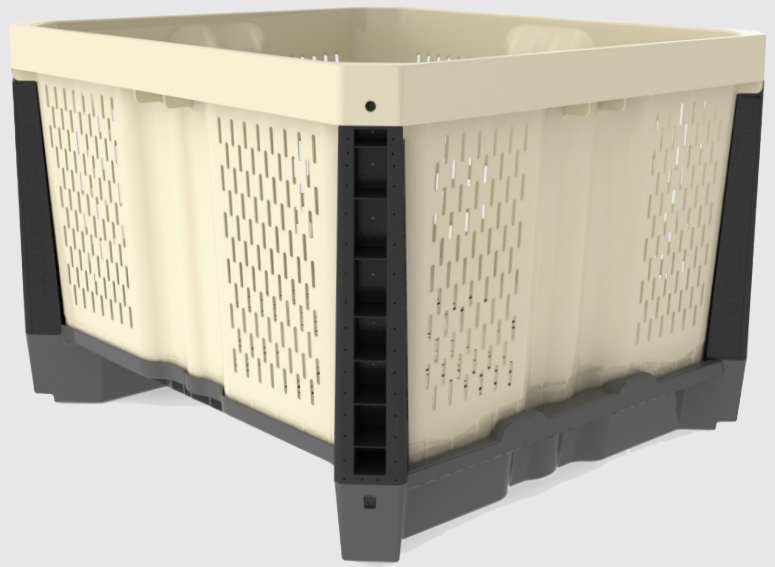


Hybrid 44P-FV

HYBRID FAMILY

The ultra-light, yet strong, Hybrid 44P is a revolutionary plastic bin. It easily assembles in seconds to offer a great bin solution for handling, storing, or shipping agricultural product. Ventilation can be configured for the specific application, or can be completely solid. Shown here is the fully vented version, indicated by the suffix "-FV". It is also shown here with the new reinforced columns, for added stacking capacity. When empty it is easily disassembled and nested for efficient empty storage or freight, which makes it a perfect returnable shipping bin solution, and why its moniker has become the "Shipper Bin".



Features

Disassembles for efficient shipping

Easy and quick snap off frame

Easy to repair

Interlocking when stacked for safety

Smooth soft surfaces to protect fruit

Shape offers a bruise buffer zone on outside of walls to protect fruit from adjacent stacks

Durable FDA-approved plastic

Hybrid 44P-FV

800-845-6555
www.iplglobal.com

Using the Hybrid 44P-FV



Hybrid 44P FV 2-Way Pallet Specification

Load Capacity	950lbs (430.9 kg)
Volume Capacity	44,676 cu. in. (732.1 liters)
Tare Weight	63 lbs (28.57 kg) LF with 2-way pallet 69 lbs (31.29 kg) SF with 2-way pallet
Maximum Stack Weight ¹	8,500 lbs (3,856 kg)
Molding Process	Injection molding
Material	High-strength PP, U.V. stabilized
Approval	FDA-regulated material
Ventilation Slots	Configurable, vented or solid
Fork Lift Entry	2-Way openings, straps on long sides or 2-Way openings straps on short sides
External Dimensions straps on long side	48" (L) x 44" (W) x 30 3/4" (H) 1219mm (L) x 1118mm (W) x 781mm (H)
External Dimensions straps on short side	48" (L) x 44" (W) x 32 3/64" (H) 1219mm (L) x 1118mm (W) x 814mm (H)
Internal Dimensions	Length: 46 5/8" / 1,184.28mm Width: 42 1/8" / 1,070mm Minimal Clearance: 36 49/50" / 939.3mm
Tare Weight	68 lbs (30.84 kg) SF with 4-way pallet
Fork Lift Entry	4-Way openings, straps on short side
External Dimensions	48" (L) x 44" (W) x 32 3/64" (H) 1219 mm (L) x 1118 mm (W) x 814 mm (H)

Notes

Dimensions assume tolerance of 1/4". Volume capacities assume tolerance of 5% and tare weights assume a tolerance of 4% unless noted otherwise. Ambient temperature approximately equal to 75° F. Data is subject to change.

1 Stack Weight = (weight of bin contents + tare weight of bin) X number of bins in stack

Please refer to the appropriate User Guide for information on the safe transportation, stacking and handling of Macro products. The User Guides in PDF format, call us at 800.845.6555.



Hybrid 44P FV 4-Way Pallet Specification

Similar to 2-Way except:

