

ShuttleBin 330

SHUTTLEBIN FAMILY



The ShuttleBin 330 is easy to set-up, use for displays, knock-down, and return. The optional drop-down doors allow for easy access on the retail floor, then the easy-to-fold side walls allow the ShuttleBin to collapse to a height of 12.1 inches. Durable and fully-vented, this compact-folding bin is the single solution for retail transport, storage, and display.

Features

Unique ten-point zipper latch system locks folding walls securely and ensures fast set-up and knock-down for increased productivity

Impact-grade plastic lasts longer, standing up to heavy day-to-day use, season after season

FDA-approved materials are certified safe for use with food products, eliminating many HACCP problems associated with wood bins

Splinter-resistant plastic delivers reduced maintenance costs, fewer injuries to workers, and less damage to product and equipment

Hundreds of ventilation slots reduce heat absorption and help your products stay cool. They also provide improved air flow on the retail floor

Lightweight design (only 107 pounds with two drop-down doors) makes handling easy and reduces shipping costs

Nonporous surfaces won't absorb water or dehydrate your product like wood bins, and they provide a constant tare weight throughout their use

Easy-to-sanitize, smooth surfaces keep cleaning costs to a minimum. A high-pressure wash removes most debris; a nonabrasive brush can dislodge any remaining items

ShuttleBin 330

800-845-6555
www.iplglobal.com

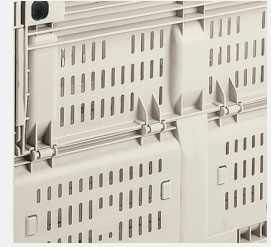
Benefits of Using ShuttleBin 330



Non-sequential folding side walls and 10-point zipper latch system ensure fast and secure set-up and knock-down.



Ideal for closed-loop distribution systems, easy-to-fold side walls allow the ShuttleBin to fold flat. Three folded bins can be stored in the space of one for reduced return freight costs.



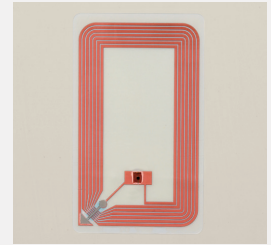
Hundreds of ventilation slots promote air flow and help products stay cooler longer.



The positive interlocking foot design allows for secure stacking up to 8 bins high.*



Smooth, nonporous surfaces are easy to sanitize and won't trap debris, breed bacteria, or absorb chemicals like wood bins.



Several identification methods including RFID tags and attractive foil embossing are available.

ShuttleBin 330 Specifications

Load Capacity	1,500 lbs (680.4 kg)
Volume Capacity	47,000 cubic inches (770.2 liters)
Tare Weight	No door: 105 lbs (49.0 kg) 1 door: 106 lbs (49.4 kg) 2 doors: 107 lbs (49.9 kg)
Maximum Stack Weight ¹	No door: 11,120 lbs (5,043.9 kg) 1 door: 8,896 lbs (4,035.2 kg) 2 doors: 6,000 lbs (2,721.6 kg)
Molding Process	High-pressure injection molding
Material	Polypropylene, UV stabilized
Approval	FDA-regulated material
Ventilation Slots	Customizable, from fully vented to completely solid
Fork Lift Entry	Four-way: 3 11/16" opening with curved fork entry to minimize fork damage
External Dimensions	40" (L) x 48" (W) x 33" (H) 1,016 mm (L) x 1,219.2 mm (W) x 838 mm (H)
Options	Solid base and walls Drop-down doors on one or both 48" walls for easy produce access Printed pallet base color nameplate: 9 3/4" x 3 7/8" Customer identification with RFID tags Graphic card holders (card size: 11" x 14 1/2")
Internal Dimensions	36 3/4" (L) x 44 3/4" (W) x 26 7/8" (H) 933.5 mm (L) x 1,136.7 mm (W) x 682.6 mm (H)

Notes

Dimensions assume tolerance of 1/4". Volume capacities assume tolerance of 5% and tare weights assume a tolerance of 4% unless noted otherwise. Ambient temperature approximately equal to 75° F. Data is subject to change.

1 Stack Weight = (weight of bin contents + tare weight of bin) X number of bins in stack

Please refer to the appropriate User Guide for information on the safe transportation, stacking and handling of Macro products. The User Guides in PDF format are available, call us at 800.845.6555.